

# Specification



LED / LCD

**Quad Multi-Viewer  
Seamless Switcher  
AMS-QMV-H9**

## Safety

This chapter illustrates safety of the H9 Quad Multi-Viewer to ensure the product's storage, transport, installation and use safety. Safety instructions are applicable to all personnel who contact or use the product. First of all, pay attention to following points.

- Read through the instructions.
- Retain all instructions.
- Comply with all instructions

### ■ Storage And Transport Safety

- Pay attention to dust and water prevention.
- Avoid long-term direct sunlight.
- Do not place the product at a position near fire and heat.
- Do not place the product in an area containing explosive materials and strong electromagnetic environment.
- Place the product at a stable position to prevent damage or personal injury caused by dropping.
- Save the packing box and materials which will come in handy if you ever have to store and ship the product. For maximum protection during storage and shipping, repack the product as it was originally packed at the factory.

### ■ Installation And Use Safety

- Only trained professionals may install the product.
- Plugging and unplugging operations are prohibited when the power is on.
- Ensure safe grounding of the product.
- Always wear a wrist band and insulating gloves.
- Do not place the product in an area having frequent or strong shake.
- Perform dust removing regularly.
- Contact Amoonsky for maintenance at any time, rather than have the product disassembled and maintained by non-professionals without authorization.
- Replace faulty parts only with the spare parts supplied by Amoonsky.

## ■ Overview

AMS-QMV-H9 is a HDMI Quad Multi-viewer, also is a 9-channel HDMI seamless switcher.

- **Input&Output Port** -- H9 uses 9 channels of HDMI video input and 1 channel of HDMI output, Support 4K and HDCP;
- **Support Audio Sync Output** -- H9 has 9 channels of HDMI audio input, and 1 independent audio output, the audio and video synchronized output. can select the audio input channel through the remote control or press the remote key, also can mute with one key on the remote control;
- **Support Remote Control** -- 2.4G RF remote control is adopted, has long remote control distance and strong penetration ability;
- **Support One Key Black & One Key Freeze** -- When the image output needs to be closed during the performance, the black screen key can be used to realize fast black screen. During playback, it may be necessary to freeze the current picture to realize "pause" picture;
- **Seamless Switching** -- In single picture window mode, 9-channel arbitrary switching is seamless switching.



## ■ Picture Segmentation Mode



Single Window



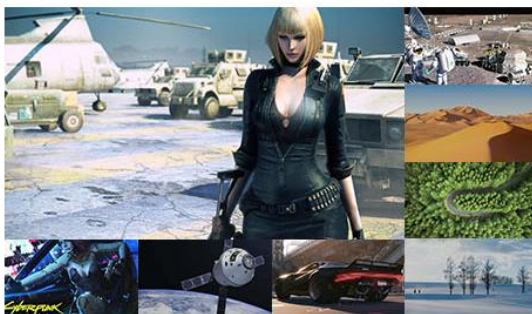
Dual Window



4 Window



6 Window



8 Window - 1



8 Window - 2

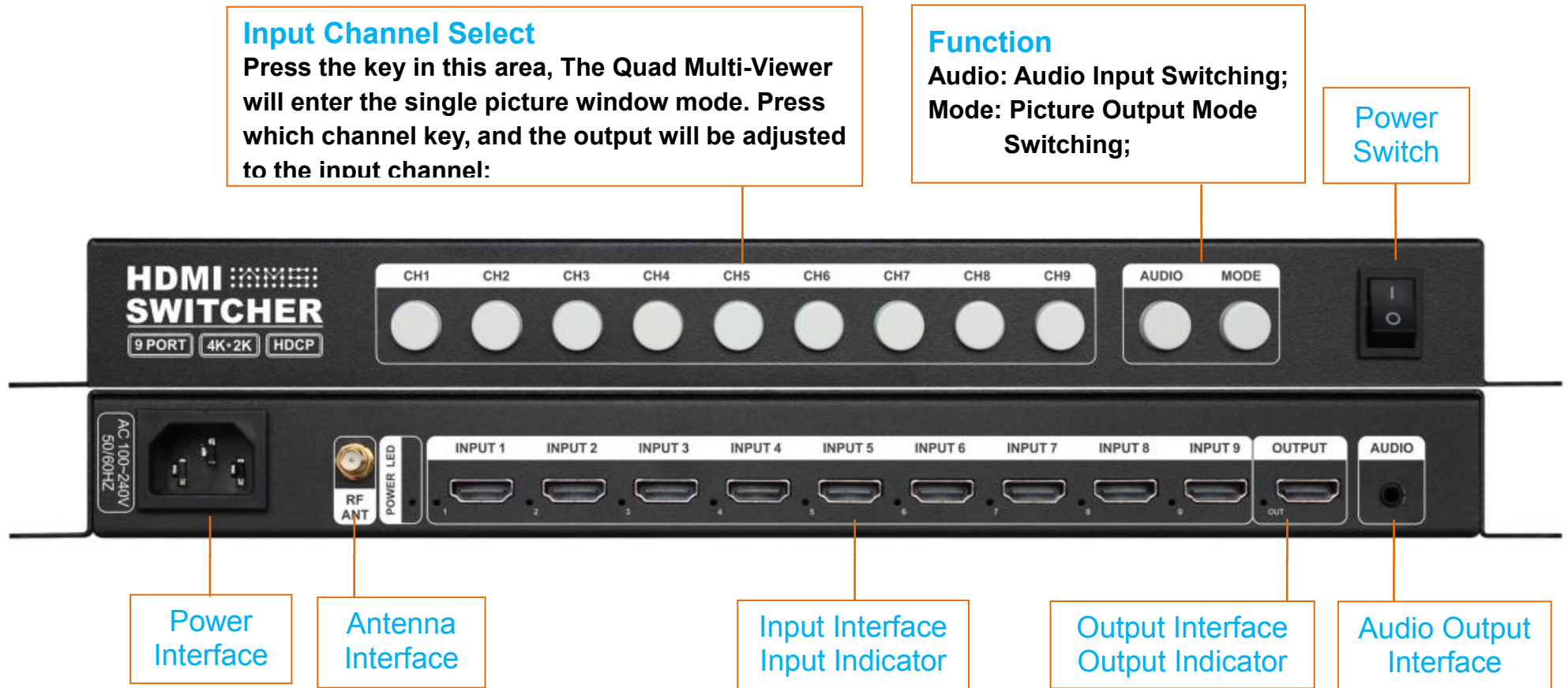


9 Window - 1



9 Window - 2

# Introduction



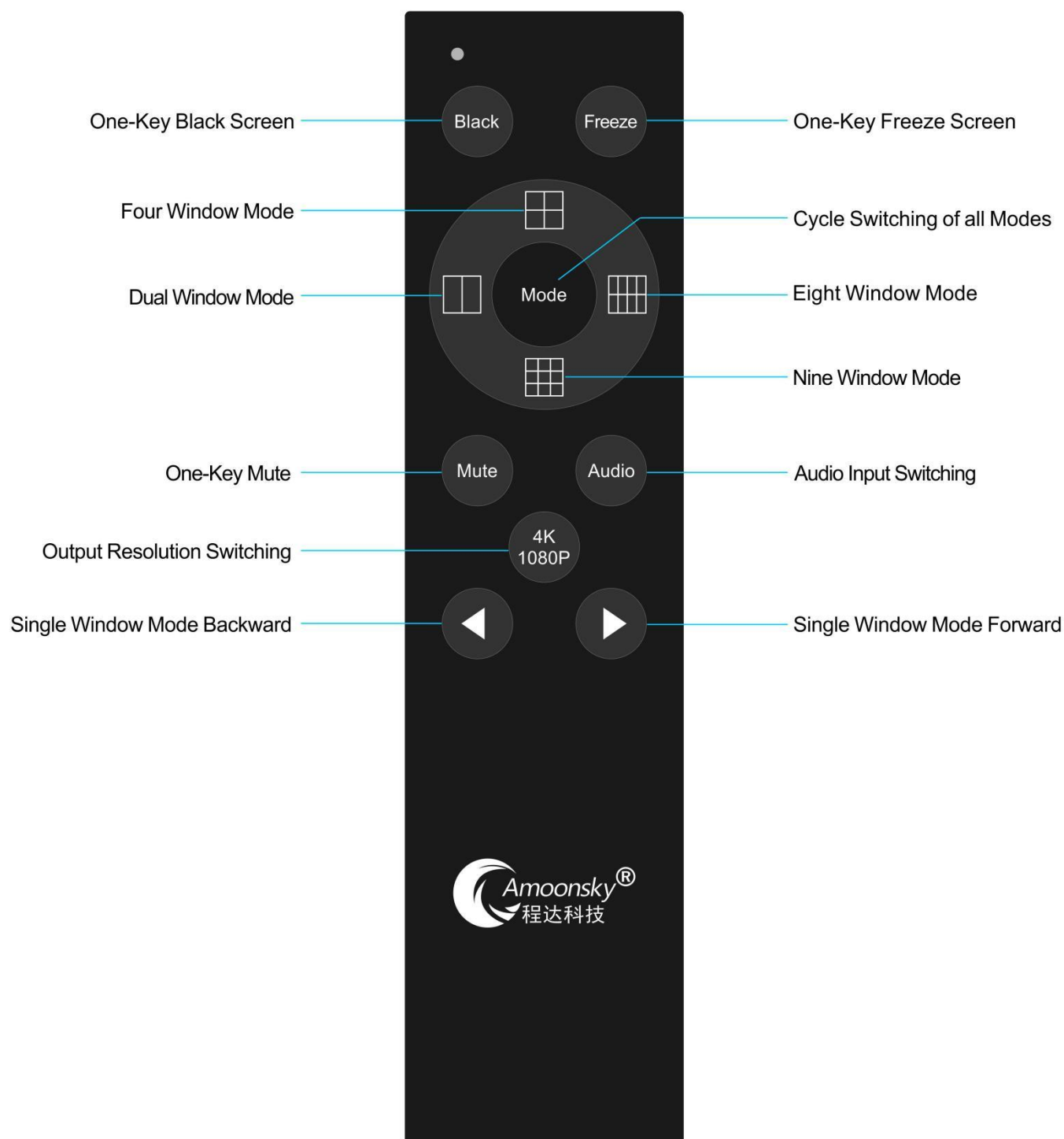


# Applications

## Screen



# Remote Control Introduction



# Parameters

Port Specifications		
HDMI Video Input 9*HDMI INPUT 1*HDMI OUPUT	Interface Type: HDMI-A Socket Signal Standard: HDMI1.4 Backward compatible; Resolution: VESA Standard, ≤3840×2160p@30Hz;	
AUDIO OUT	Audio Output Interface, Dual Track;	
General Specifications		
Power Supply	Internal 100~240V AC, 50~60Hz ;	
Temperature	Storage: T: -40℃ ~ +80 ℃ 、 H: 10% ~ 90%, Non-condensing; Working: T: 0 ℃ ~ +60 ℃ 、 H: 10% ~ 90%, Non-condensing;	
Machine Size	370mm (Length) x 185 mm (Width) x 35mm (Height) <Including Ear Hook>	
Packing Size	420mm (Length) x 255 mm (Width) x 85mm (Height)	
Product Weight	Gross Weight : 2.0Kg ;	
Package Weight	Volume Weight : 2.5Kg ;	
Warranty	1 Year; Note: All Rated Voltages Are On Average ±10%;	
Packing List		
Standard	Remote * 1 ; Power Cable * 1 ; Remote Antenna * 1 ; Certificate * 1 ; Warranty Card * 1 ;	
Model	Description	P/N
AMS-QMV-H9	Standard Model	PN202111002