

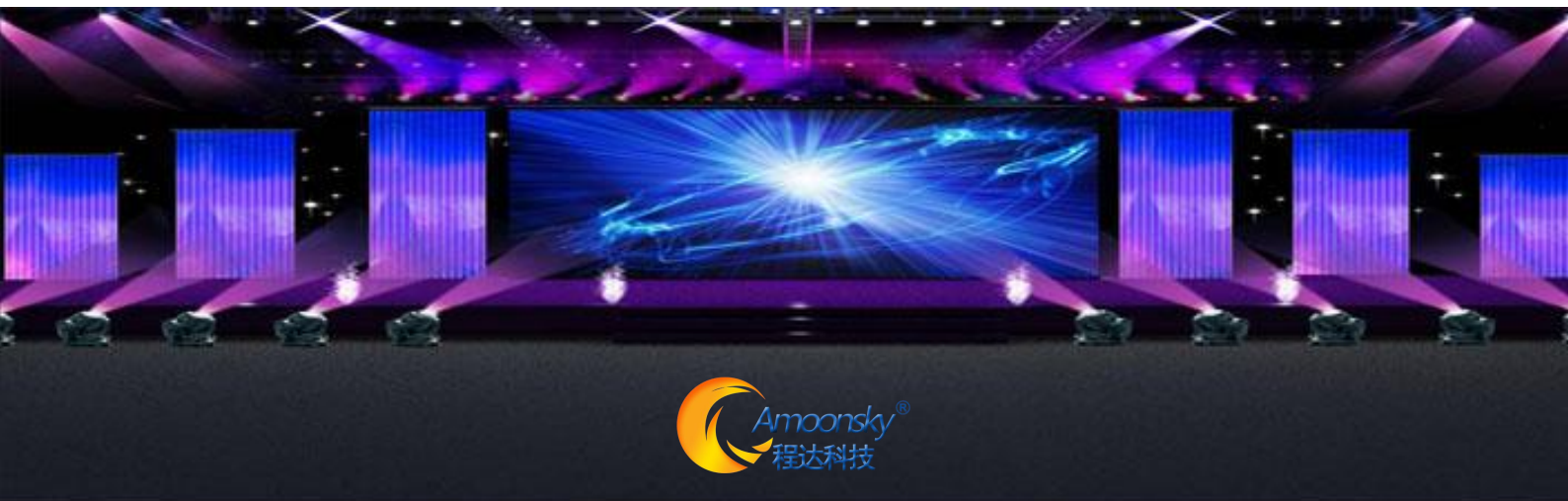
AMS-MC158

6 Channels Video Processor & splicer
2 Channels splicing

AMS-MC158 Standard

- Intelligent Splicing
- Vertical Synchronization

- ▶ Signal Switching Fade- In And Fade- Out
- ▶ 6 Channels Digital-Analog Video Input
1AV、1DVI、2HDMI、1VGA、1USB
- ▶ 2-Channels 4 DVI Splicing Output
- ▶ Support USB Player
- ▶ 5.3 Million Pixel Custom Resolution
- ▶ 10 Mode Saved And Recall
- ▶ Support One Key Black Or Freeze Function
- ▶ Synchronization Audio Decoding Output
- ▶ Support Timing Switching Function
- ▶ Max output resolution: 7680x640@60Hz
4608x1152@60Hz、3840x1280@60Hz

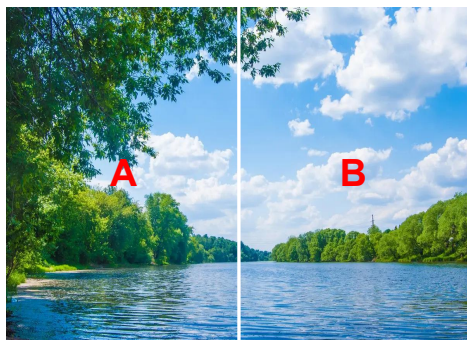


Applications

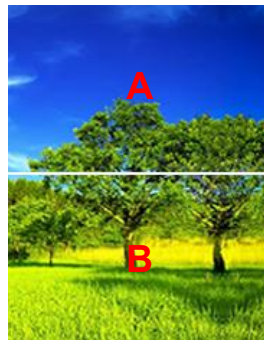
■ Topological Diagram



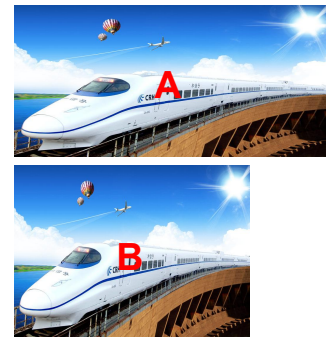
■ Splicing Application



Horizontal Splicing

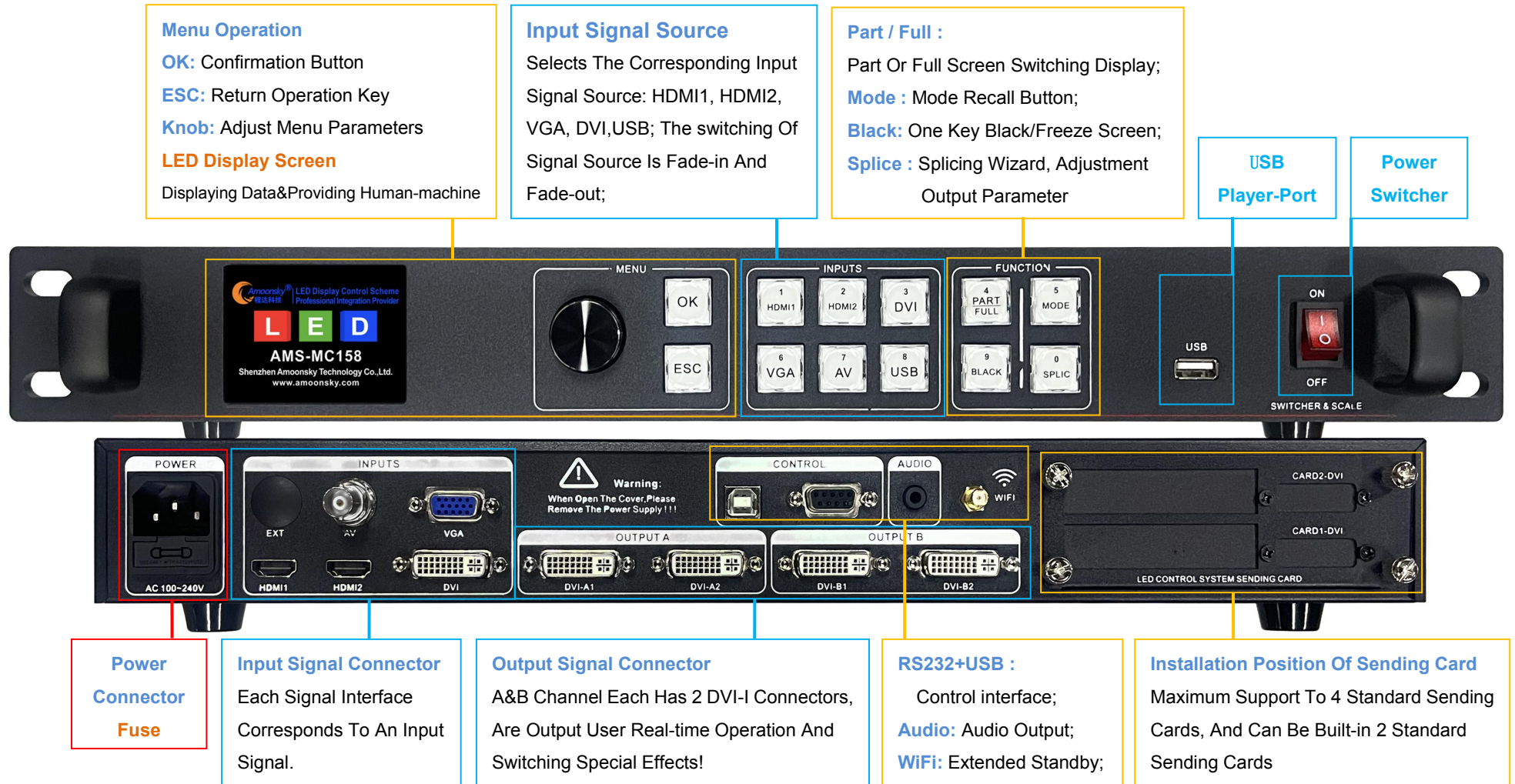


Vertical Splicing



2 LED Different Sizes

Panel Introduction



Parameters

HDMI Input

Quantity	2
Connector	HDMI-A
Signal Standard	DVI 1.0 , HDMI 1.3
Supported Resolutions	VESA, PC To 1920*1200@60Hz, HD To 1080P, Customized EDID;

DVI Input

Quantity	1
Connector	DVI-I
Signal Standard	DVI 1.0 , HDMI 1.3
Supported Resolutions	VESA, PC To 1920*1200@60Hz, HD To 1080P, Customized EDID;

VGA Input

Quantity	1
Connector	VGA-DB15
Signal Standard	R, G, B, Hsync, Vsync : 0 to1Vpp±3dB (0.7V Video+0.3v Sync) 75 ohm black level: 300mV Sync-tip: 0V ;
Supported Resolutions	VESA, PC to 1920x1200

AV Input

Input Quantity	1
Connector	BNC
Signal Standard	PAL , NTSC , 1Vpp±3db (0.7V Video+0.3v Sync) 75 ohm
Supported Resolutions	480i , 576i

USB Player Input

Quantity	1
Connector	USB-A
Video Standard	1920x1080@60Hz (RM, RMVB, MP4, MOV, MKV, WMV, AVI, 3GP)
Picture Standard	.JPG, .JPEG , .PNG , .BMP ;

Audio Output

Output Quantity	1
Connector	3.5 Audio Mouth , Stereo Interface ;
Signal Standard	Digital / Analog

Parameters

DVI Output

Quantity	2 Channels 4 DVI		
Connector	DVI-I		
Signal Standard	DVI 1.0		
Supported Resolutions	1024×768@60Hz	1920×1080@60Hz	Custom Resolution: 1 Channel: 2.65 Million Pixels 2Channels: 5.3 Million Pixels
	1280×720@60Hz	1920×1200@60Hz	
	1280×1024@60Hz	1920×1280@60Hz	
	1600×1200@60Hz		

Whole Machine

Machine Weight	5.0kg
Packing Weight	7.0kg
Size (mm)	Machine Size (Including Interfaces): 485mm (L) X 385mm (W) X 65mm (H) Packing Size: 530mm (L) X 425mm (W) X 120mm (H)
Power Supply	100VAC – 240VAC 50/60Hz
Maximum Power	35 W
Temperature	0°C~55°C
Storage Humidity	10%~90%
Type	AMS-MC158 (Standard)

